

Rural Work Order Cover Sheet

RAM Transaction #: 609410 1 OF 2

Year: 24 - 25

Account Numbers Involved: 533448, 533449, 533450

Sequence #1-2: RE-TAXLOTTED FROM 08-3W-36C-01800 TO 08-3W-36-01400.

Sequence #3: 533448 COMBINED INTO 533449 FOR MAPPING PURPOSES. ACREAGE SET TO ZERO IN PREPARATION OF CANCELLATION. -44.63

Sequence #4: 533448 COMBINED INTO 533449 FOR MAPPING PURPOSES. +44.63

Sequence #5: ACREAGE CORRECTION PER DEED AND MCSR 39994. -0.62 533449

Sequence #6: ADJUSTMENT FROM 533449 TO 533450. MARION COUNTY PROPERTY LINE ADJUSTMENT CASE NO.

23-036. -6.76 533449

Sequence #7: ADJUSTMENT FROM 533449 TO 533450. MARION COUNTY PROPERTY LINE ADJUSTMENT CASE NO.

23-036. +6.76 533450

	Check For:			Check For:		Forms Included:	
	Yes	No		Yes	No		✓
Move Building Permits	<input checked="" type="checkbox"/>	<input type="checkbox"/>	Fire Patrol (Email Supervisor)	<input type="checkbox"/>	<input checked="" type="checkbox"/>	RAM Report	<input checked="" type="checkbox"/>
Move Photos	<input checked="" type="checkbox"/>	<input type="checkbox"/>	Multi-Section	<input type="checkbox"/>	<input checked="" type="checkbox"/>	Processing Forms	<input checked="" type="checkbox"/>
Update Apex	<input checked="" type="checkbox"/>	<input type="checkbox"/>	Tagged for 2 nd year Reset	<input type="checkbox"/>	<input checked="" type="checkbox"/>	Before and After Maps	<input checked="" type="checkbox"/>
Update Account Notes	<input checked="" type="checkbox"/>	<input type="checkbox"/>	Exemptions	<input type="checkbox"/>	<input checked="" type="checkbox"/>	Multi-Section Processing Form	<input type="checkbox"/>
PAT LIAB	<input type="checkbox"/>	<input checked="" type="checkbox"/>	Update Tracker	<input checked="" type="checkbox"/>	<input type="checkbox"/>	Calculation Form(s)	<input type="checkbox"/>

Miscellaneous Notes: SEQ 1-2 HAVE NO ACTION

533448 READY TO CANCEL

Appraiser: WW Date: 7/3/24

Appraisal Review: WW Date: 7/3/24

Data Entry: Chris Date: 7/9/24

Tax Year	Account ID	MTL	Transaction	Vou	Recorded Date	Transaction Comment	Operation	Voucher Notes	Code	+/- Size	Size
2024	533450	083W36C001800	609410	1	3/22/2024 11:22	LOT LINE ADJUSTMENT 1 OF 2 WITH COMBINATION FOR MAPPING PURPOSES PRIOR TO AND ACREAGE CORRECTION - JMS	RETAXLOTTING - FROM	RE-TAXLOTTED FROM 08-3W-36C-01800 TO 08-3W-36-01400.			
2024	533450	083W360001400	609410	2	3/22/2024 11:22	LOT LINE ADJUSTMENT 1 OF 2 WITH COMBINATION FOR MAPPING PURPOSES PRIOR TO AND ACREAGE CORRECTION - JMS	RETAXLOTTING - TO	RE-TAXLOTTED FROM 08-3W-36C-01800 TO 08-3W-36-01400.			
2024	533448	083W360000700	609410	3	3/22/2024 11:22	LOT LINE ADJUSTMENT 1 OF 2 WITH COMBINATION FOR MAPPING PURPOSES PRIOR TO AND ACREAGE CORRECTION - JMS	COMBINATION - FROM	533448 COMBINED INTO 533449 FOR MAPPING PURPOSES. ACREAGE SET TO ZERO IN PREPARATION OF CANCELLATION.	92590	-44.63	A
2024	533449	083W360000600	609410	4	3/22/2024 11:22	LOT LINE ADJUSTMENT 1 OF 2 WITH COMBINATION FOR MAPPING PURPOSES PRIOR TO AND ACREAGE CORRECTION - JMS	COMBINATION - TO	533448 COMBINED INTO 533449 FOR MAPPING PURPOSES.	92590	44.63	A
2024	533449	083W360000600	609410	5	3/22/2024 11:22	LOT LINE ADJUSTMENT 1 OF 2 WITH COMBINATION FOR MAPPING PURPOSES PRIOR TO AND ACREAGE CORRECTION - JMS	SIZE CHANGE	ACREAGE CORRECTION PER DEED AND MCSR 39994.	92590	-0.62	A
2024	533449	083W360000600	609410	6	3/22/2024 11:22	LOT LINE ADJUSTMENT 1 OF 2 WITH COMBINATION FOR MAPPING PURPOSES PRIOR TO AND ACREAGE CORRECTION - JMS	LOT LINE ADJUSTMENT - FROM	ADJUSTMENT FROM 533449 TO 533450. MARION COUNTY PROPERTY LINE ADJUSTMENT CASE NO. 23-036.	92590	-6.76	A
2024	533450	083W360001400	609410	7	3/22/2024 11:22	LOT LINE ADJUSTMENT 1 OF 2 WITH COMBINATION FOR MAPPING PURPOSES PRIOR TO AND ACREAGE CORRECTION - JMS	LOT LINE ADJUSTMENT - TO	ADJUSTMENT FROM 533449 TO 533450. MARION COUNTY PROPERTY LINE ADJUSTMENT CASE NO. 23-036.	92590	6.76	A

Rural Work Order Processing Form

One Page Per Account

1-
 Sequence #: 4 of 7 Account Number: 533449 MTL: 083W360000600 RAM Transaction ID: 609410

Type: COM LLA PPT SEG SUB AC R of W Vacate Map Maintenance

Account Details

Ma Sa Nh: 0706000 Prop Class: 581 RMV Class: 581
 Assigned Appraiser: MLORD Part of Unit: Yes or No Fire Patrol: Yes or No

Land Fragment

Account From	Code Area	Liab Yr	Land Class	LUC	Value Source	# of Acres	Zone	Land Adjustments
533449	92590	1983	6H	005	FARM USE – EFU	6.10	REST	FSOIL
533449	92590	2009		005	FOREST HOMESITE	1.0	REST	EXCELLENT VIEW
533449	92590	1968	STFC	005	SMALL TRACT FOREST	3.0	REST	
533449	92590				SA OSDA			
533448	92590	1983	STFC	005	SMALL TRACT FOREST	44.63	REST	

Total Acres: 54.73

Improvements

Account From	Code Area	Imp ID	Stat Class	Description	Account From	Code Area	Imp ID	Stat Class	Description
				NO CHANGE					

Adjustments: _____

Exception

New MAV: _____ Sys Calc No Change to MAV

Rural Work Order Processing Form

One Page Per Account

Sequence #: 5 of 7 Account Number: 533449 MTL: 083W360000600 RAM Transaction ID: 609410

Type: COM LLA PPT SEG SUB AC R of W Vacate Map Maintenance

Account Details

Ma Sa Nh: 0706000 Prop Class: 581 RMV Class: 581

Assigned Appraiser: MLORD Part of Unit: Yes or No Fire Patrol: Yes or No

Land Fragment

Account From	Code Area	Liab Yr	Land Class	LUC	Value Source	# of Acres	Zone	Land Adjustments
533449	92590	1983	6H	005	FARM USE – EFU	5.48	REST	FSOIL
533449	92590	2009		005	FOREST HOMESITE	1.0	REST	EXCELLENT VIEW
533449	92590	1968	STFC	005	SMALL TRACT FOREST	3.0	REST	
533449	92590				SA OSDA			
533449	92590	1983	STFC	005	SMALL TRACT FOREST	44.63	REST	

Total Acres: 54.11

Improvements

Account From	Code Area	Imp ID	Stat Class	Description	Account From	Code Area	Imp ID	Stat Class	Description
				NO CHANGE					

Adjustments: _____

Exception

New MAV: _____ Sys Calc No Change to MAV

Rural Work Order Processing Form

One Page Per Account

Sequence #: 6 of 7 Account Number: 533449 MTL: 083W360000600 RAM Transaction ID: 609410

Type: COM LLA PPT SEG SUB AC R of W Vacate Map Maintenance

Account Details

Ma Sa Nh: 0706000 Prop Class: 550 RMV Class: 450

Assigned Appraiser: MLORD Part of Unit: Yes or No Fire Patrol: Yes or No

Land Fragment

Account From	Code Area	Liab Yr	Land Class	LUC	Value Source	# of Acres	Zone	Land Adjustments
533449	92590	1968	STFC	005	SMALL TRACT FOREST	2.72	REST	
533449	92590				SA-OSDA			
533449	92590	1983	STFC	005	SMALL TRACT FOREST	44.63	REST	

Total Acres: 47.35

Improvements

Account From	Code Area	Imp ID	Stat Class	Description	Account From	Code Area	Imp ID	Stat Class	Description
				ALL MOVING					

Adjustments: _____

Exception

New MAV: 0 Sys Calc No Change to MAV

Rural Work Order Processing Form

One Page Per Account

Sequence #: 7 of 7 Account Number: 533450 MTL: 083W360001400 RAM Transaction ID: 609410

Type: COM LLA PPT SEG SUB AC R of W Vacate Map Maintenance

Account Details

Ma Sa Nh: 07/06/000 Prop Class: 581 RMV Class: 451

Assigned Appraiser: MLORD Part of Unit: Yes or No Fire Patrol: Yes or No

Land Fragment

Account From	Code Area	Liab Yr	Land Class	LUC	Value Source	# of Acres	Zone	Land Adjustments
533450	92590	1983	4HD	005	FARM USE – EFU	1.33	REST	
533449	92590	1968	STFC	005	SMALL TRACT FOREST	0.28	REST	
533449	92590	1983	6H	005	FARM USE – EFU	5.48	REST	FSOIL
533449	92590	2009		005	FOREST HOMESITE	1.0	REST	EXCELLENT VIEW
<u>533449</u>	<u>92590</u>				<u>SA OSDA</u>			

Total Acres: 8.09

Improvements

Account From	Code Area	Imp ID	Stat Class	Description	Account From	Code Area	Imp ID	Stat Class	Description
533449	92590	1	154	MULTI STORY/BMS					
533449	92590	2	341	MP					

Adjustments: _____

Exception

New MAV: 268,860 Sys Calc No Change to MAV

08 3W 36C

08 3W 36C

08 3W 36C

08 3W 36C



MARION COUNTY, OREGON
SW 1/4 SEC 36 T8S R3W W.M.
SCALE 1" = 200'

LEGEND

- LINE TYPES**
- Tablot Boundary
 - Road Right-of-Way
 - Railroad Right-of-Way
 - Private Road ROW
 - Subdivision/Plat Boundary
 - Waterline - Taxlot Boundary
 - Waterline - Non Boundary
 - Historical Boundary
 - Easement
 - Railroad Centerline
 - Taxcode Line
 - Map Boundary
- CORNER TYPES**
- + 1/16th Section Cor.
 - @ DIC Corner
 - ⊕ 1/4 Section Cor.
 - ⊕ 1/2 Section Corner
 - ⊕ 2/3 Section Corner
- NUMBERS**
- Tax Code Number
00000
- Acreage All acres listed are Net Acres, excluding any portions of the tablot within public ROWs
- NOTES**
- Tick Marks: A tick mark in the road indicates that the labeled dimension extends into the public ROW

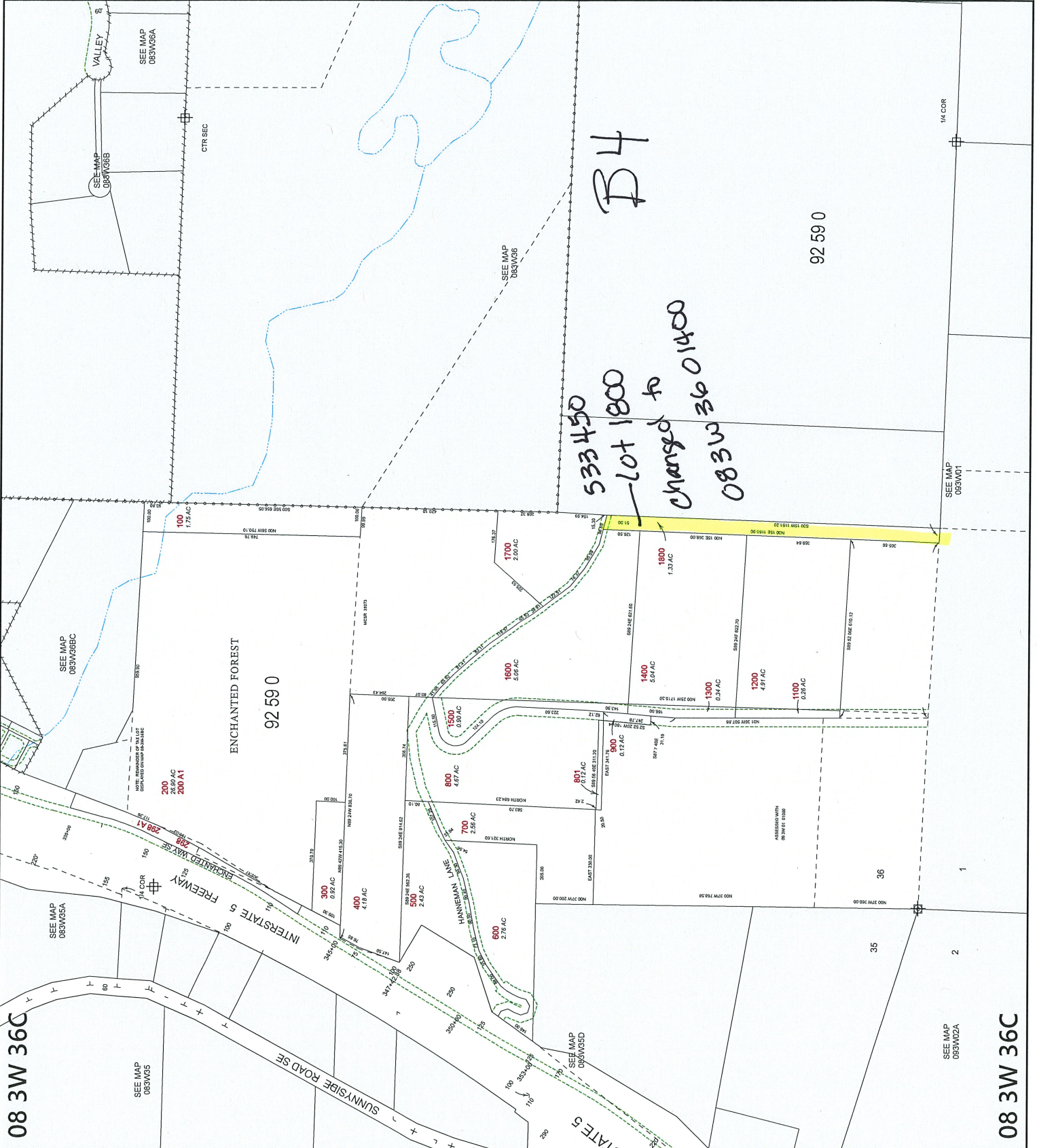
CANCELLED NUMBERS	
299	
301	
1101	
1201	
1201A1	

DISCLAIMER: THIS MAP WAS PREPARED FOR ASSESSMENT PURPOSES ONLY



FOR ADDITIONAL MAPS VISIT OUR WEBSITE AT www.co.marion.or.us

PLOT DATE: 2/3/2022



SEE MAP 083W02A

SEE MAP 083W01

SEE MAP 083W06A

SEE MAP 083W06B

SEE MAP 083W05

SEE MAP 083W05D

SEE MAP 083W05A

SEE MAP 083W05B

SEE MAP 083W05C

SEE MAP 083W05E

SEE MAP 083W05F

SEE MAP 083W05G

SEE MAP 083W05H

SEE MAP 083W05I

SEE MAP 083W05J

SEE MAP 083W05K

SEE MAP 083W05L

SEE MAP 083W05M

SEE MAP 083W05N

SEE MAP 083W05O

SEE MAP 083W05P

SEE MAP 083W05Q

SEE MAP 083W05R

SEE MAP 083W05S

SEE MAP 083W05T

SEE MAP 083W05U

SEE MAP 083W05V

SEE MAP 083W05W

SEE MAP 083W05X

SEE MAP 083W05Y

SEE MAP 083W05Z

SEE MAP 083W06A

SEE MAP 083W06B

SEE MAP 083W06C

SEE MAP 083W06D

SEE MAP 083W06E

SEE MAP 083W06F

SEE MAP 083W06G

SEE MAP 083W06H

SEE MAP 083W06I

SEE MAP 083W06J

SEE MAP 083W06K

SEE MAP 083W06L

SEE MAP 083W06M

SEE MAP 083W06N

SEE MAP 083W06O

SEE MAP 083W06P

SEE MAP 083W06Q

SEE MAP 083W06R

SEE MAP 083W06S

SEE MAP 083W06T

SEE MAP 083W06U

SEE MAP 083W06V

SEE MAP 083W06W

SEE MAP 083W06X

SEE MAP 083W06Y

SEE MAP 083W06Z

SEE MAP 083W07A

SEE MAP 083W07B

SEE MAP 083W07C

SEE MAP 083W07D

SEE MAP 083W07E

SEE MAP 083W07F

SEE MAP 083W07G

SEE MAP 083W07H

SEE MAP 083W07I

SEE MAP 083W07J

SEE MAP 083W07K

SEE MAP 083W07L

SEE MAP 083W07M

SEE MAP 083W07N

SEE MAP 083W07O

SEE MAP 083W07P

SEE MAP 083W07Q

SEE MAP 083W07R

SEE MAP 083W07S

SEE MAP 083W07T

SEE MAP 083W07U

SEE MAP 083W07V

SEE MAP 083W07W

SEE MAP 083W07X

SEE MAP 083W07Y

SEE MAP 083W07Z

SEE MAP 083W08A

SEE MAP 083W08B

SEE MAP 083W08C

SEE MAP 083W08D

SEE MAP 083W08E

SEE MAP 083W08F

SEE MAP 083W08G

SEE MAP 083W08H

SEE MAP 083W08I

SEE MAP 083W08J

SEE MAP 083W08K

SEE MAP 083W08L

SEE MAP 083W08M

SEE MAP 083W08N

SEE MAP 083W08O

SEE MAP 083W08P

SEE MAP 083W08Q

SEE MAP 083W08R

SEE MAP 083W08S

SEE MAP 083W08T

SEE MAP 083W08U

SEE MAP 083W08V

SEE MAP 083W08W

SEE MAP 083W08X

SEE MAP 083W08Y

SEE MAP 083W08Z

SEE MAP 083W09A

SEE MAP 083W09B

SEE MAP 083W09C

SEE MAP 083W09D

SEE MAP 083W09E

SEE MAP 083W09F

SEE MAP 083W09G

SEE MAP 083W09H

SEE MAP 083W09I

SEE MAP 083W09J

SEE MAP 083W09K

SEE MAP 083W09L

SEE MAP 083W09M

SEE MAP 083W09N

SEE MAP 083W09O

SEE MAP 083W09P

SEE MAP 083W09Q

SEE MAP 083W09R

SEE MAP 083W09S

SEE MAP 083W09T

SEE MAP 083W09U

SEE MAP 083W09V

SEE MAP 083W09W

SEE MAP 083W09X

SEE MAP 083W09Y

SEE MAP 083W09Z

SEE MAP 083W10A

SEE MAP 083W10B

SEE MAP 083W10C

SEE MAP 083W10D

SEE MAP 083W10E

SEE MAP 083W10F

SEE MAP 083W10G

SEE MAP 083W10H

SEE MAP 083W10I

SEE MAP 083W10J

SEE MAP 083W10K

SEE MAP 083W10L

SEE MAP 083W10M

SEE MAP 083W10N

SEE MAP 083W10O

SEE MAP 083W10P

SEE MAP 083W10Q

SEE MAP 083W10R

SEE MAP 083W10S

SEE MAP 083W10T

SEE MAP 083W10U

SEE MAP 083W10V

SEE MAP 083W10W

SEE MAP 083W10X

SEE MAP 083W10Y

SEE MAP 083W10Z

SEE MAP 083W11A

SEE MAP 083W11B

SEE MAP 083W11C

SEE MAP 083W11D

SEE MAP 083W11E

SEE MAP 083W11F

SEE MAP 083W11G

SEE MAP 083W11H

SEE MAP 083W11I

SEE MAP 083W11J

SEE MAP 083W11K

SEE MAP 083W11L

SEE MAP 083W11M

SEE MAP 083W11N

SEE MAP 083W11O

SEE MAP 083W11P

SEE MAP 083W11Q

SEE MAP 083W11R

SEE MAP 083W11S

SEE MAP 083W11T

SEE MAP 083W11U

SEE MAP 083W11V

SEE MAP 083W11W

SEE MAP 083W11X

SEE MAP 083W11Y

SEE MAP 083W11Z

SEE MAP 083W12A

SEE MAP 083W12B

SEE MAP 083W12C

SEE MAP 083W12D

SEE MAP 083W12E

SEE MAP 083W12F

SEE MAP 083W12G

SEE MAP 083W12H

SEE MAP 083W12I

SEE MAP 083W12J

SEE MAP 083W12K

SEE MAP 083W12L

SEE MAP 083W12M

SEE MAP 083W12N

SEE MAP 083W12O

SEE MAP 083W12P

SEE MAP 083W12Q

SEE MAP 083W12R

SEE MAP 083W12S

SEE MAP 083W12T

SEE MAP 083W12U

SEE MAP 083W12V

SEE MAP 083W12W

SEE MAP 083W12X

SEE MAP 083W12Y

SEE MAP 083W12Z

SEE MAP 083W13A

SEE MAP 083W13B

SEE MAP 083W13C

SEE MAP 083W13D

SEE MAP 083W13E

SEE MAP 083W13F

SEE MAP 083W13G

SEE MAP 083W13H

SEE MAP 083W13I

SEE MAP 083W13J

SEE MAP 083W13K

SEE MAP 083W13L

SEE MAP 083W13M

SEE MAP 083W13N

SEE MAP 083W13O

SEE MAP 083W13P

SEE MAP 083W13Q

SEE MAP 083W13R

SEE MAP 083W13S

SEE MAP 083W13T

SEE MAP 083W13U

SEE MAP 083W13V

SEE MAP 083W13W

08 3W 36

08 3W 36

08 3W 36

08 3W 36



MARION COUNTY, OREGON
SEC 36 T8S R3W W.M.
SCALE 1" = 400'

LEGEND

- LINE TYPES**
- Taxlot Boundary
 - Historical Boundary
 - Road Right-of-Way
 - Railroad Right-of-Way
 - Private Road ROW
 - Subdivision/Plat Boundary
 - Waterline - Taxlot Bndry
 - Waterline - Non Bndry
 - Easement
 - Railroad Centerline
 - Traverse Line
 - Map Boundary
 - Waterline - Non Bndry
- CORNER TYPES**
- + 1/6TH Section Cor.
 - ⊕ 1/4 Section Cor.
 - ⊙ D/C Corner
 - ⊕ 16.15' Section Corner
 - ⊕ 21.22' Section Corner
- NUMBERS**
- Tax Code Number
 - 00 000
- Acreage
0.25 AC
- NOTES**
- Tick Marks: A tick mark in the road indicates that the labeled dimension extends into the public ROW

CANCELLED NUMBERS	
303	
401	
700	

DISCLAIMER: THIS MAP WAS PREPARED FOR ASSESSMENT PURPOSES ONLY



FOR ADDITIONAL MAPS VISIT OUR WEBSITE AT www.co.marion.or.us

PLOT DATE: 7/2/2024

